

# Sample Pattern

from A Year in the Life of Sunbonnet Sue



22" x 26"

*Designed, made, machine appliquéd, and machine quilted by Christine Porter.*



# JANUARY:

## Sunbonnet Sue Goes Skiing

Whether she's zooming down the slopes of the Alps, the Rockies, or the Sierra Nevada mountains, Sue is a superstar on skis. Afterward, she looks forward to joining her friends to build a snowman. What a wonderful way to spend a brisk January day!

### MATERIALS FOR THIS QUILT

See also "Basic Materials" and "Cutting Frames, Borders, Backings, and Bindings" (page 6) for additional details on yardages and cutting.

- 12½" x 9½" piece of white tone-on-tone snow print 1 for Sue block background
- 12½" x 7½" piece of blue sky print for Sue block background
- 8" x 18" piece of mottled print for mountain appliqués (fabric A)
- 4" x 12" piece of blue-and-green print for ski and ski-pole appliqués (fabric B)
- 7" x 7" square of medium red print for foot, pocket, and bonnet appliqués (fabric C)
- 4" x 9" piece of medium blue print for hand, dress-trim, and bonnet-trim appliqués (fabric D)
- 7" x 9" piece of blue polka-dot print for dress appliqué (fabric E)
- 9" x 12" piece *each* of two green prints for pine-tree appliqués (fabrics F)
- 6" x 8" piece of white tone-on-tone print 2 for snowman appliqués (fabric G)
- 4" x 4" square of black tone-on-tone print for snowman's hat and mitten appliqués (fabric H)
- 2" x 2" square *each* of four different-colored prints for snowman's scarf appliqués (fabrics I)
- 1⅛ yards of 18"-wide lightweight fusible web
- Threads in assorted colors for blanket-stitch appliqué

### The Fabrics Make the Quilt

Tone-on-tone white is the natural choice for snow; consider a fabric with a touch of silver metallic in it for a sparkly touch. A gray print suggests rocky mountains; touches of white hint at snow. As an alternative, look for a cool color such as purple. A directional fabric for the skis suggests motion—cut the fabric with the directional element running end to end for both the ski and ski-pole appliqués.



## CUTTING THE APPLIQUÉS

See “Adding the Appliqués” (page 8) for guidance when cutting and preparing the appliqué pieces. Appliqué patterns for this quilt appear on pages 20 and 21. Pieces marked with an asterisk (\*) appear with “The Sue Essentials” patterns (page 14).

### From fabric A, cut:

1 each of mountains 1–3

### From fabric B, cut:

1 ski

1 ski pole

### From fabric C, cut:

1 foot\*

1 sleeve/pocket\*

1 bonnet\*

### From fabric D, cut:

1 hand\*

1 dress trim\*

1 bonnet trim\*

### From fabric E, cut:

1 dress\*

### From each fabric F, cut:

7 pine trees (14 total)

### From fabric G, cut:

4 snowmen

### From fabric H, cut:

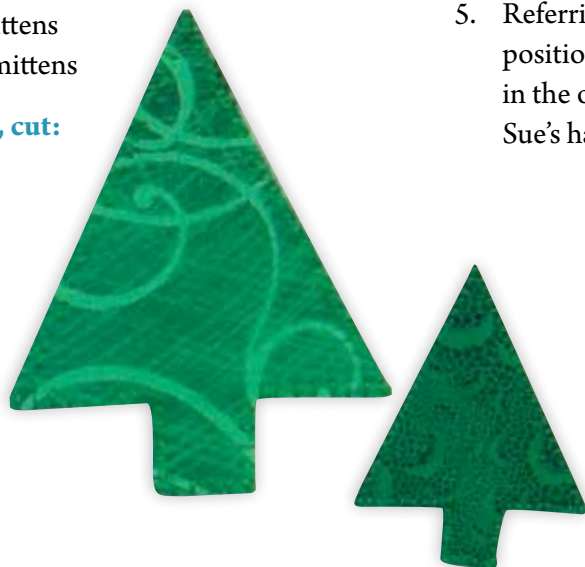
4 snowman’s hats

4 snowman’s left mittens

4 snowman’s right mittens

### From each fabric I, cut:

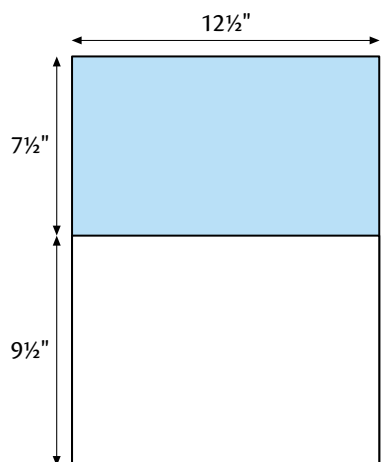
1 scarf (4 total)



## ASSEMBLING THE QUILT

For this quilt, appliqué mountain pieces 1–3 *before* adding the borders. Refer to “Sue Basics” (page 6) as needed for help with the following steps.

1. Sew the 12½" x 7½" blue sky background piece and the 12½" x 9½" white snow piece together along the 12½" edges. Press the seam allowances open.

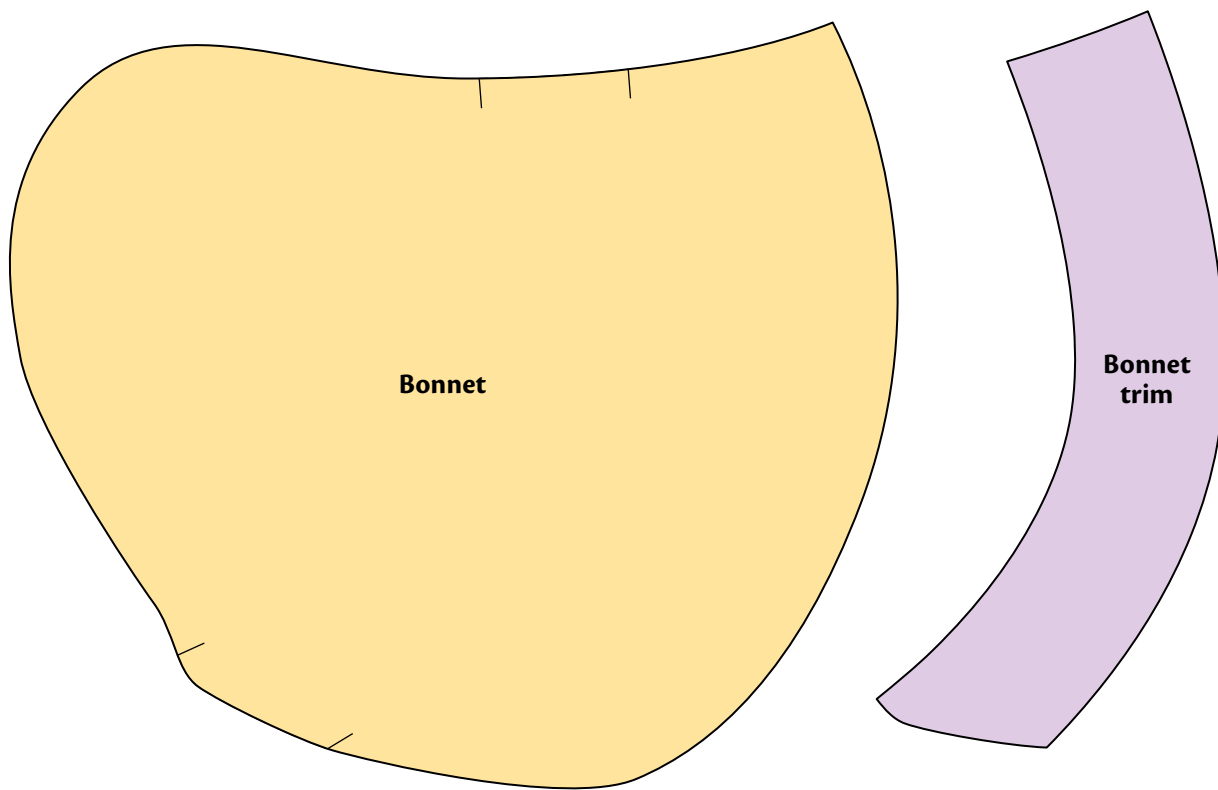


2. Referring to the appliqué placement diagram (facing page), position the mountain appliqués 1, 2, and 3 on the quilt.
3. Following the manufacturer’s instructions for the fusible web, adhere the mountain appliqués to the quilt top.
4. Sew the side, top, and bottom frame strips to the quilt. Add the side outer borders, and then the top and bottom outer borders with corner squares.
5. Referring to the appliqué placement diagram, position the remaining appliqués on the quilt in the order shown, slipping the ski pole under Sue’s hand.



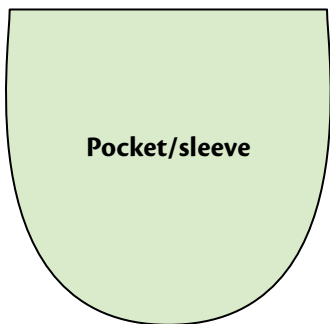
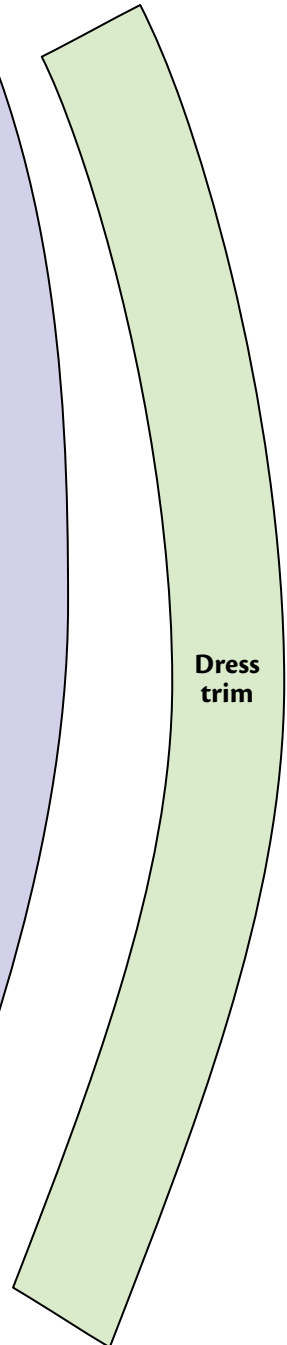
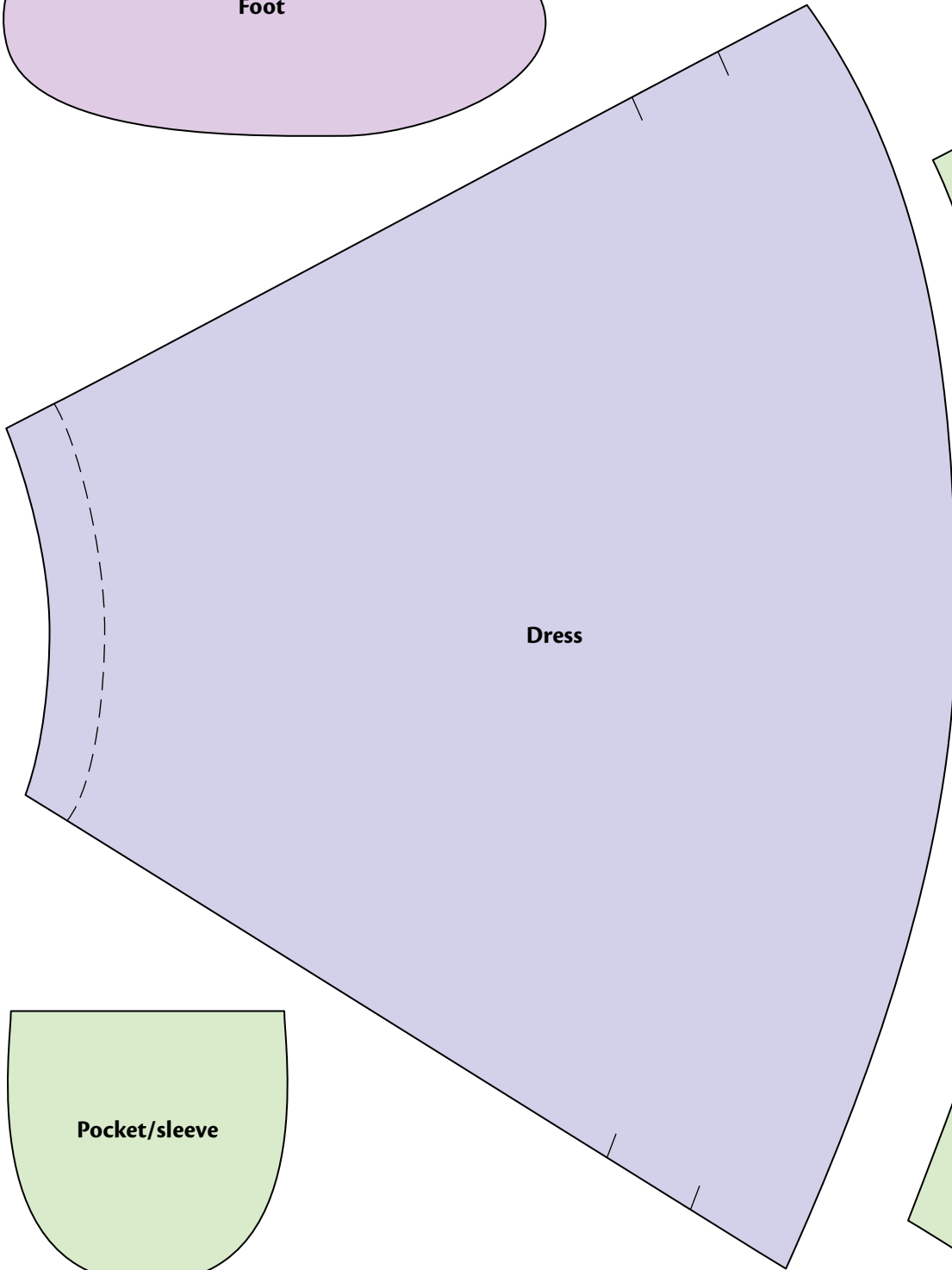
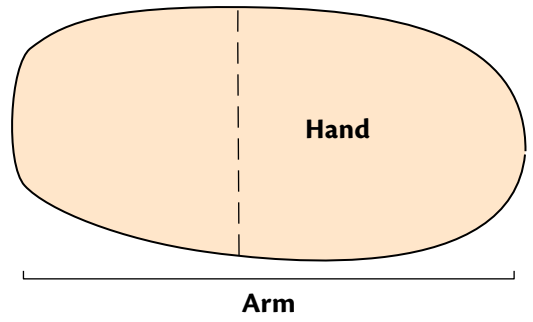
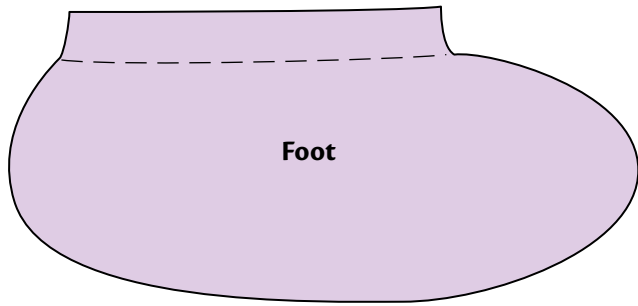
## THE SUE ESSENTIALS

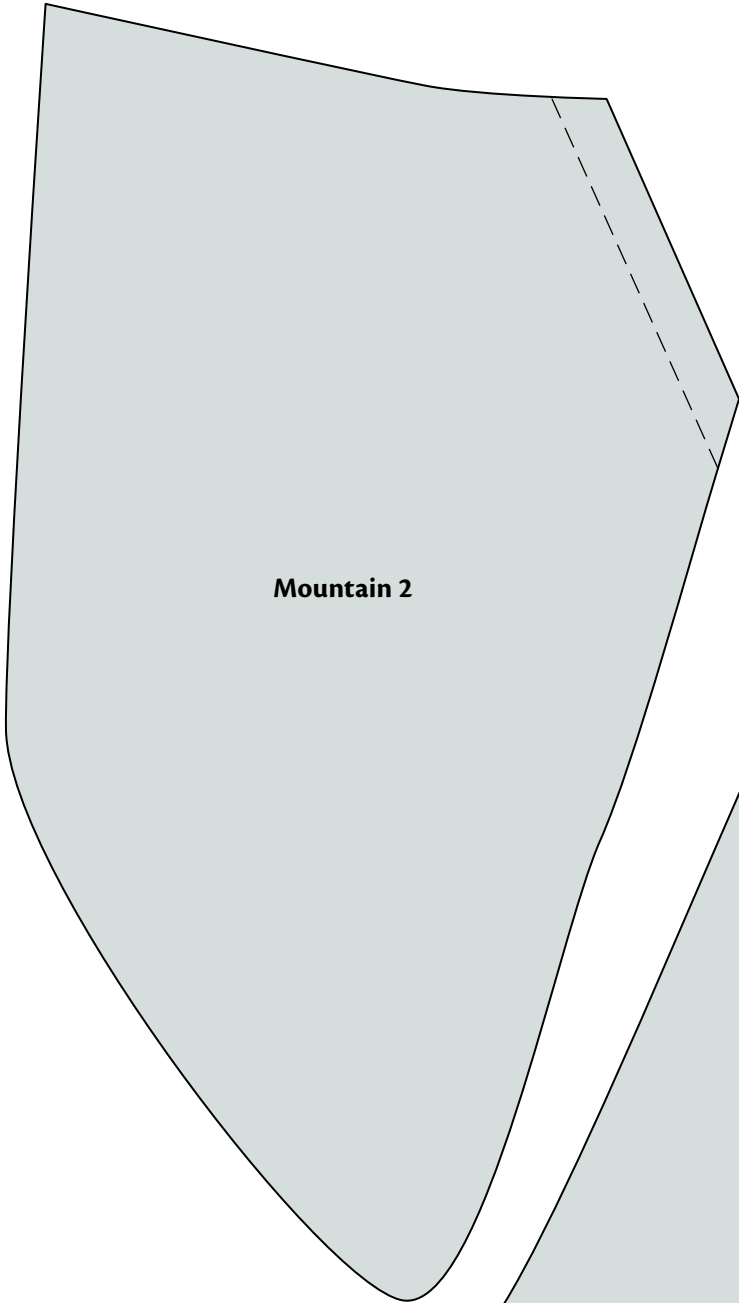
Here are the pattern pieces common to the basic Sue figure. These shapes appear again and again in the quilts.



Patterns are reversed for  
fusible appliqué.

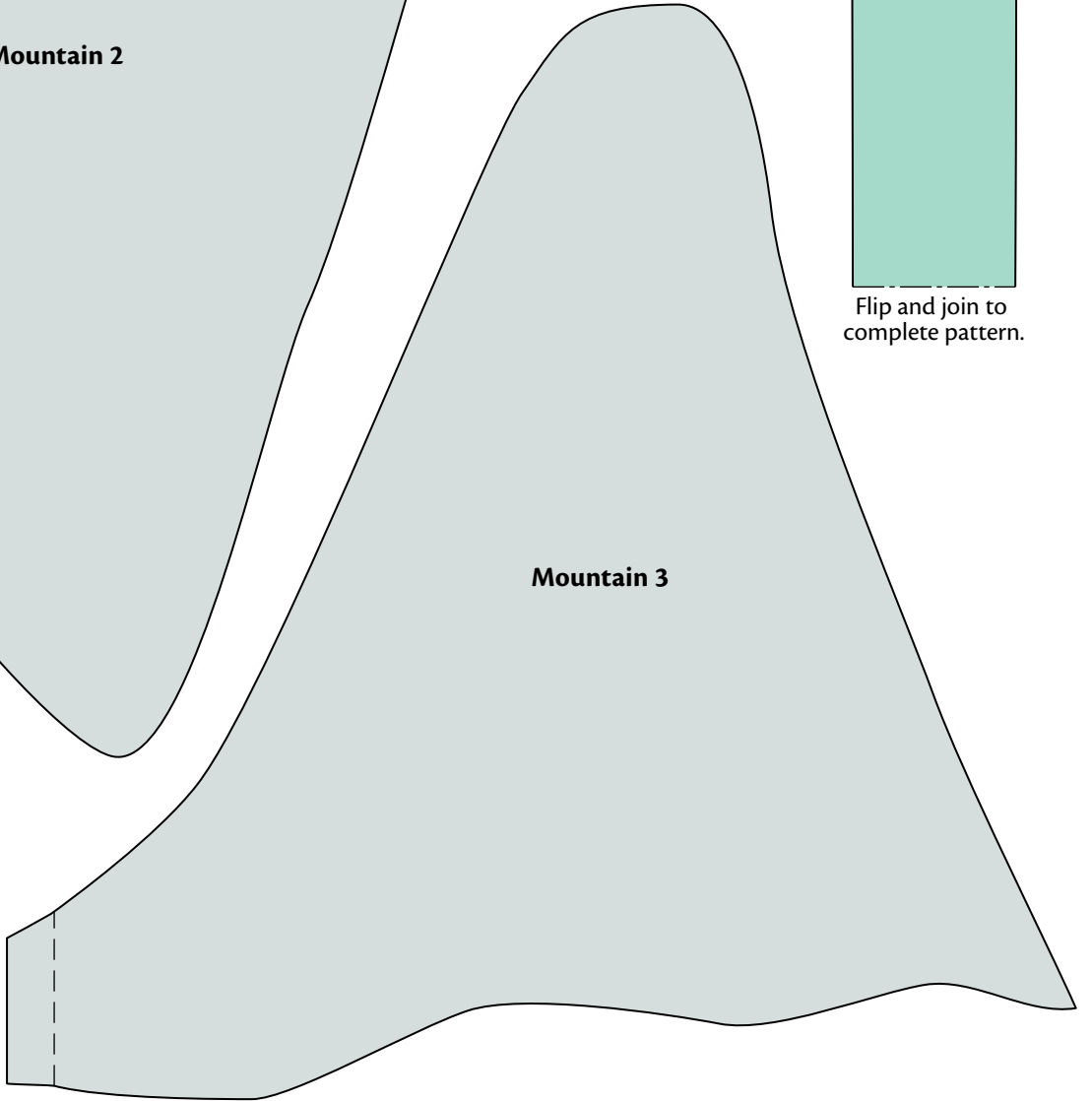
Patterns are reversed for fusible appliqué.



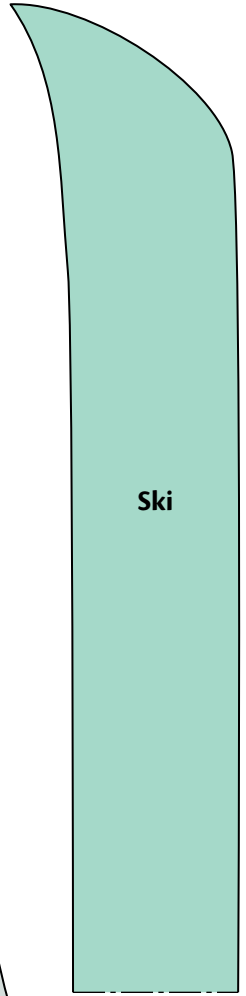


**Mountain 2**

Patterns are reversed for fusible appliqué.



**Mountain 3**



**Ski**

Flip and join to complete pattern.

Patterns are reversed for fusible appliqué.

